

# Atlas Copco drilling machine **Rock Buggy**



**Drilling capacity up to 50 linear meter/hour (164 ft/h)**

*Sustainable Productivity*

**Atlas Copco**

# Big capacity in a small unit

**Rock Buggy, a small, hydraulic mobile drilling unit, is our high quality, high capacity drilling unit for the dimension stone industry.**

## **Boost your productivity**

Tailor-made for marble, granite and sandstone quarries, Rock Buggy provides you with straight holes. It gives you a low total cost of ownership with its high drilling productivity, drilling speed up to 2 m/min (6.5 ft/min), low fuel consumption of 6 l/h (1.6 US gal/h) and an efficient operation, that you can complement with the horizontal drilling option.

## **Precise dimensions cut costs**

In the drilling process, Rock Buggy's precise output dimensions help ensure a high quality product, while exact measurements also contribute to low loading and transportation costs.

## **Rails keep you in line**

Combining the unit's stability with an anti-jamming system and guide rails, ensures holes are parallel to each other and aligned in a straight line. This ensures high drilling quality and capacity.

## **Better working conditions**

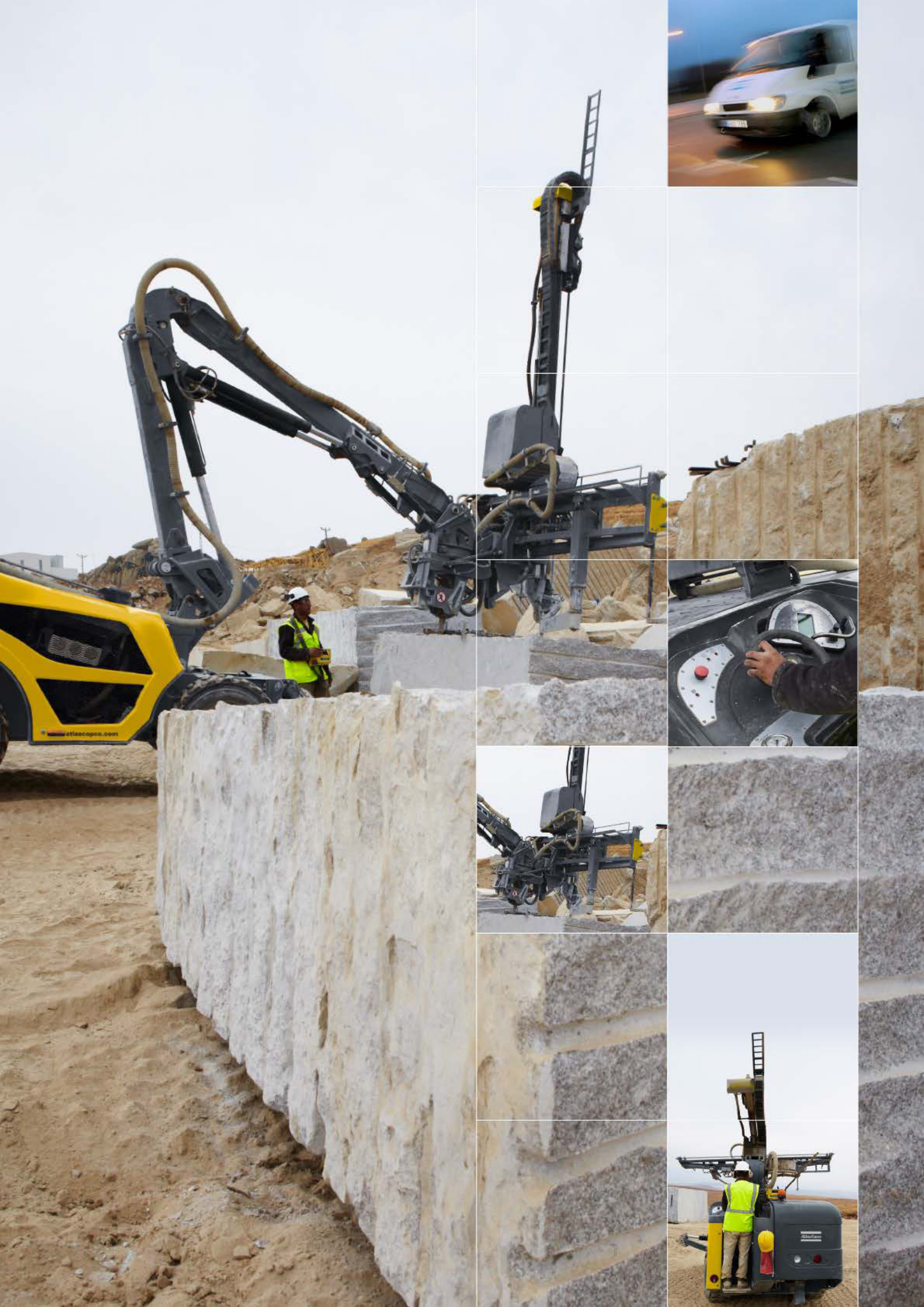
The rig is equipped with cable remote control which allows a safe operation. Furthermore, the effective dust collector system grants an high suction capacity with a reduction of the noise level emission.

The hydrostatic transmission and 3-way steering system is a unique feature of the machine which improves the tramming capacity and aids climbing gradients in tough working conditions

---

## Main benefits

- Tailor-made for the dimension stone industry
- Drills parallel and straight holes
- High drilling speed capacity
- Low fuel consumption



Guide rail reduces positioning time and ensures aligned straight holes

Folding boom allows a wide coverage area

Integrated dust collector reduces encumbrance

Stabilizer legs provides greater stability in challenging terrains

Four wheel drive and four steering wheels allow high mobility and flexibility

Oscillating rear axle that provides good terrainability

## Quick facts

### DSI applications:

Marble  
Granite  
Sandstone  
Limestone

### Suitable for the following drilling stages:

Primary cut drilling  
Bench dressing  
Block dressing

### Drilling method:

Tophammer

### Drill steel:

Integral or tapered drill rods  
First rod 2.4 m (7' 10 1/2")

### Hole diameter:

28-45 mm (1 1/8" – 1 3/4")

### Rock drills:

DF420  
DF500X

### Guide rail:

Total rail length 3.7 m (12' 2")  
Useful rail length 3.05 m (10')

### Drilling coverage area:

65 m<sup>2</sup> (700 ft<sup>2</sup>)

### Engine:

85 HP (63 kW)

### Compressor:

1.3 m<sup>3</sup>/min (46 cfm)  
max 6 bar pressure (87 psi)

### Transport dimensions:

(L) 5.90 m, (W) 2.20 m, (H) 2.38 m  
(L) 19' 4", (W) 7' 3", (H) 7' 10"

### Weight:

5 700 kg (12 540 lb)

## Options

RRC (Radio Remote Control) System  
Drill rod extractor

Kit for horizontal drilling available only on 2.4 m feed length

Automatic drilling device measuring hole depth and distance between holes